

Every student. Every chance. Every day.



2022-2023 Impact Report



LETTER FROM OUR BOARD CHAIR

Dear Friends and Supporters,



When I assumed the role of Board Chair three years ago, Access Academies was embarking on an exciting new chapter. The ink was drying on its partnership with Saint Louis University, Shelly Williams was taking the helm as Executive Director, and our promising College and Career Success Initiative was still getting off the ground. Today, I am happy to report that with your generous support and the incredible dedication of our students and families,

Access continues to provide transformative opportunities that inspire our region's youth to think, dream, and achieve big!

This year, we have much to celebrate. We expanded our College & Career program by adding a third counselor and doubling the amount of our college scholarship. We grew our enrichment program with inspiring new courses, advanced our comprehensive multi-year program evaluation through SLU's School of Education, and raised over \$650,000 at the Celebration Dinner. Further still, we added five new talented members to the board and witnessed more of our high school seniors accepted to Saint Louis University than ever before. To say that I am proud of what our students, families, and staff have accomplished over the last 12 months is an understatement.

Our success would not have been possible, however, without the enduring vision of our founder John Vatterott and the relentless dedication of board member and former Graduate Support Director Terry Mehan. This fall, both John and Terry passed away. And while we miss them dearly, we have found comfort in knowing that their legacies will continue to impact the lives of our students across the region.

As we look ahead, I turn the reins over to incoming Board Chair, Tom Wheeland. Tom joined the Access Board in 2021 and has since served as a member of the Finance Committee. In his professional life, Tom is the National Practice Leader at FORVIS, and he earned his J.D. from St. Louis University and his B.B.A. in Finance from the University of Notre Dame. A good friend of John Vatterott, Tom is enthusiastic about the opportunity to further his mission and is especially excited to help Access accomplish new milestones as we approach our 20th anniversary in 2025.

In closing, I would like to express my sincerest gratitude to the Access family — our dedicated students, families, supporters, donors, and partners — for entrusting me to lead this organization. It has been an honor and a joy to know that together we are shaping a brighter future for the next generation and are giving every student, every chance, every day.

Sincerely,

A handwritten signature in blue ink that reads "Brian Day".

Brian Day
Chair, Board of Directors

OUR MISSION

Access propels middle school students who have been historically underserved through high school and on to college and career success with enrichment, counseling, and scholarships.

OUR VISION

Access envisions a vibrant St. Louis community where equity in education allows every child to think, dream, and achieve big.

OUR HISTORY

Access was founded in 2005 by a group of St. Louisans convinced that education was the most enduring path out of poverty. Embracing an innovative model that emphasized extended school days, a challenging enrichment curriculum, and 11+ years of counseling, they started the first Academy with 15 students in a single South City middle school. In 2022-2023, Access served 488 students in three partner middle schools, 40 high schools (including 20 private, college-prep high schools), and 45 colleges and post-secondary institutions across the country.



SAINT LOUIS
UNIVERSITY.

Investing In Our Students



\$16,560

average 4-year
investment in each
high school student



\$7,041

average 3-year
investment in each
middle school student



210

STUDENTS

in 40 high schools, including 209 in 20
private, college-preparatory schools



149

STUDENTS

in 3 partner
middle schools



129

STUDENTS

in 45 colleges or other
post-secondary institutions



11+

years of counseling,
mentoring, and advocacy
for each student



15

college visits offered to each
Access student from 8th grade
to high school graduation



1,035

hours of extended-day
and summer enrichment
instruction provided annually



\$742,457

total amount awarded in
high school scholarships
and fees



\$71,600

total amount awarded
in Access College
Scholarships since 2020



\$3,663

average annual
high school tuition
award per student



\$189

average monthly high
school tuition payment
per family

SINCE OUR FOUNDING IN 2005:

\$9 million

awarded in high school
& college scholarships

1,397 students

benefited from
our programs

Our Programs



Individualized Support Increases Academic Success

Research proves that strong relationships are the foundation for student success. At Access, every student is embraced and supported by a community of trusted, caring adults who help them succeed and persist in school, work, and life. Our individualized counseling ensures every student's academic, social, financial, and emotional needs are met.



Challenging Our Youth to Dream

Access provides over 1,000 hours of high-quality after-school and summer enrichment programming to our middle school students each year, a support that promotes student achievement, encourages positive behavior, and expands their definition of success. Our donors can be confident that their gifts are making a lasting difference. According to the Afterschool Alliance, "Afterschool programs also provide a significant return-on-investment, with every \$1 invested saving at least \$3 through increasing youth's earning potential and improving their performance at school."*



Illuminating a Path by Reducing Financial Barriers

At Access, we believe in equity: that every student should have every chance to thrive every day. Since our founding in 2005, Access has contributed more than \$9 million in financial scholarships to high school and college students. It's an investment that reduces financial barriers for our families and uplifts the St. Louis region.

*'This is Afterschool' Fact Sheet. Afterschool Alliance. (2020, March). <http://afterschoolalliance.org/documents/National-One-Pager-2020.pdf>

Impacting Our Region



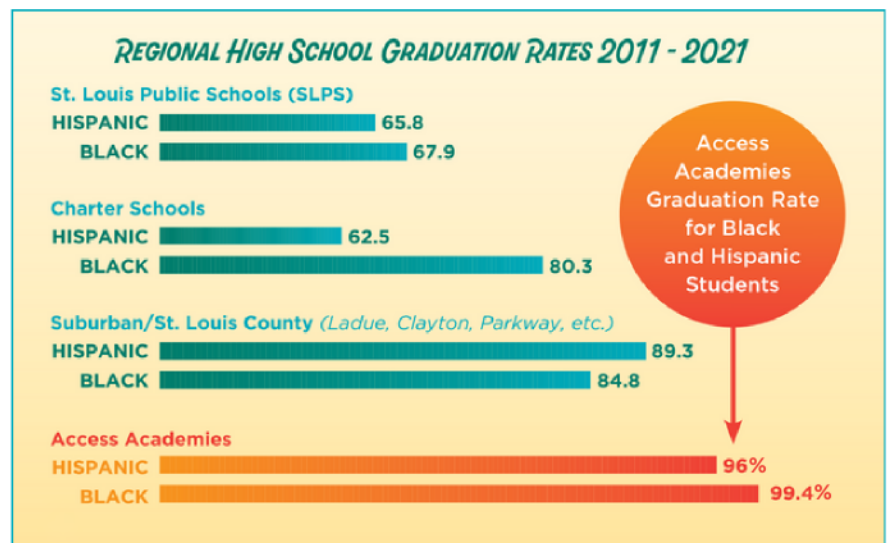
98%
ACCEPTED
to college-
preparatory high
schools



97%
GRADUATED
high school on-time
(compared to 86%
nationwide)



93%
ACCEPTED
to college or other
post-secondary
institution



Access Academies' high school graduation rates for both African American (99%) and Hispanic (96%) students exceed the national averages for both racial and ethnic groups, as well as the graduation averages for schools in St. Louis City (including St. Louis Public Schools and St. Louis Charter Schools), which are less than 90%.

Our Valued Partners

Access Academies is proud to partner with a distinguished list of educational institutions across the St. Louis region to provide scholarship, enrichment, and leadership opportunities to our scholars.

PARTNER MIDDLE SCHOOLS



SCHOLARSHIP PARTNER HIGH SCHOOLS

Althoff Catholic High School
Bishop DuBourg High School
Cardinal Ritter College Prep
Chaminade College Prep
Christian Brothers College High School
Cor Jesu Academy
De Smet Jesuit High School
Duchesne High School
Gibault Catholic High School
Incarnate Word Academy
Lutheran High School North
Lutheran High School South
Marquette Catholic High School
Nerinx Hall
Notre Dame High School
Principia School
Rosati-Kain Academy
St. John Vianney High School
St. Joseph's Academy
Saint Louis Priory School
St. Louis University High
St. Mary's South Side Catholic High School
Ursuline Academy
Villa Duchesne
Visitation Academy
Westminster Christian Academy



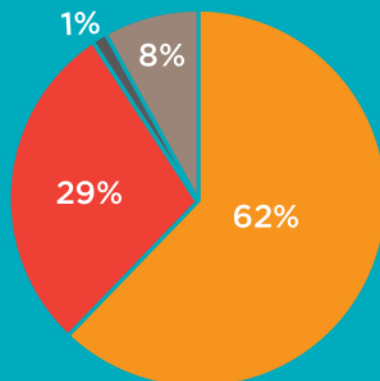
COLLEGE & POST-SECONDARY SUCCESS

This year, 129 Access scholars attended 45 colleges, universities, and post-secondary programs across the country. We awarded our college scholarship to 54 collegians and have now provided over \$71,600 in scholarship funding since 2020.

Our Financials

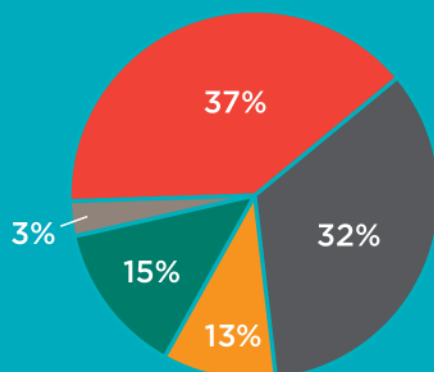
Your Dollars at Work
(Fiscal Year 9.1.22 - 8.31.23)

2022-2023 Revenue



- General Contributions & Grants: \$1,413,979
- Annual Dinner Campaign: \$654,609
- Interest/Other: \$182,478
- Cedar Creek: \$28,134

2022-2023 Expenses



- Tuition Scholarships & Fees: \$872,077
- Enrichment & Graduate Support: \$778,851
- Additional Programs & Support: \$349,208
- Fundraising & Outreach: \$314,975
- Administrative: \$67,262

Think BIG
DREAM Big
ACCESS ACADEMIES
14TH ANNUAL
Celebration Dinner

THANK YOU TO OUR SPONSORS AND SUPPORTERS

Archdiocese of St. Louis
Bayer Fund
Bryan Cave Leighton Paisner LLP
Boniface Foundation
Cass Commercial Bank
Chris Schmidt & Silvia Ledesma Ortiz
Emerson
Food Service Consultants
FORVIS
Joan & John Vatterott Family Foundation
John and Margie Simon
Lewis Rice LLC
Mercy
Merrill Lynch
Moneta
Pershing Charitable Trust
Saint Louis University
Saint Louis University School of Education
St. John Vianney High School
The Simon Law Firm
Thompson Coburn LLP
Vatterott Foundation



Thank you to everyone who made a gift this year! Scan here to see the complete list of our 2022-2023 donors.

Our Leadership Team

BOARD OF DIRECTORS

Executive Committee

John C. Vatterott
Founder & Chair Emeritus
Retired, Vatterott
Educational Centers

Brian Day*
Outgoing Board Chair
Mercy

Marian 'Bo' V. Mehan
Vice Chair
Lewis Rice LLC

Gus Gast
Development Committee Chair
Moneta Group
Investment Advisors

Cheryl Pettus
Finance Committee Chair
Bayer Corporation

Nicole Jobe
Governance Committee Chair
Thompson Coburn LLP

Pat Erb
Marketing Committee Chair
Consultant

Terry Mehan
Program Committee Chair
Retired, Access Academies

Robert J. Mathias
Retired, Cass Bank

Members

Angela Carr
Nine PBS

Nikki Doughty
Washington University
in St. Louis

Dr. Tiffany Patton
Program Committee Chair
Riverview Gardens School
District

Christopher J. Schmidt
Bryan Cave Leighton
Paisner LLP

John Simon
The Simon Law Firm

Brianna Tobias
Steadfast City Economic &
Community Partners

Thomas Wheeland
Incoming Board Chair
FORVIS

STAFF

Dave Baldwin
Director of Communications

Joslyn Bland
Graduate Support Director

Naomi Carranza
Graduate Support Counselor

Amy Clark
College & Career Director

Carolyn Dubuque
Director of Mission
Effectiveness

Vivian Garcia
Graduate Support Director

Jeanette Katic
College & Career Counselor

Jordyn Hale
Graduate Support Director

Skylah Hunter
College & Career Counselor

Peg Lord
Development Associate

Carmelita Spencer
Graduate Support Director

Shelly Williams
Executive Director

**A special thanks to Brian Day for his service as Board Chair from 2020-2023. Tom Wheeland succeeded Brian as Chair in November 2023.*

A Lasting Legacy

John Charles Vatterott
1943-2023



Founder & Chair Emeritus

"We believe every child can reach his or her potential if given the right structure, environment, education, motivation, and inspiration."

Terrence James Mehan
1951-2023



Program Committee Chair
Graduate Support Director
Director of Development

"Seeing young men and women succeed in life when given the opportunity is the greatest personal reward I have received."



Every student. Every chance. Every day.

3500 Lindell Boulevard
Fitzgerald Hall, Room 200
St. Louis, MO 63103



Support Our Students

Donate

Help our students think, dream, and achieve big! Please consider giving at accessacademies.org/donate or by returning the enclosed envelope.

Connect & Learn More

Subscribe to our e-newsletter and follow Access Academies on social media to stay up-to-date on all the latest news.



Spread the Word

After you've read this report, please share it with a friend.