

ACCESS Academies Board of Directors

John C. Vatterott (chair) – Retired, CEO and Founder, Vatterott College

Marian V. Mehan (vice chair) – Partner, Lewis, Rice, Fingersh

John Krings (treasurer) – President & CEO, International Packaging Innovations

Thomas M. Nolan (secretary) – Executive Director, ACCESS Academies

Joseph M. Church – Certified Financial Planner, Merrill Lynch

Rev. Richard H. Creason – Pastor, Holy Trinity Parish

Edith C. Cunnane – Community Volunteer

James Cunnane – Retired, CFO, General Dynamics

David O. Danis – Retired, Attorney

Mark Harrington – Vice President, A.G. Edwards, Inc./Wachovia

Marie Kenyon – Managing Attorney, Catholic Legal Assistance Ministry

Rev. Gary Meier – Pastor, Sts. Teresa & Bridget Parish

Alan Meyer – Executive Director, Concordia Technologies

Paul Minorini – Executive Director, Boys Hope/Girls Hope

John T. O'Neill – Retired, International Treasurer, Monsanto

Richard H. Patton – Executive Director, Vision for Children at Risk

Thomas W. Purcell – Consultant, Purcell & Associates

Peter Sheahan – Principal, NAI DESCO Commercial

Paul G. Sheridan, S.J. – President, Bellarmine Prep

Rev. Richard J. Tillman – Pastor, St. Cecilia Parish

Blanche M. Touhill, Ph.D. – Chancellor Emeritus, University of Missouri-St. Louis

William Tunney, Jr. – Retired, Senior Partner, Boyden

James Webb – President, St. Louis Minority Business Council

Alan G. Winkelmann – Associate Superintendent, Archdiocese of St. Louis

Staff

Carolyn Dubuque, Mission Effectiveness Director

Josh Goldman, Reading Program Director

Terry Mehan, Development Director

Thomas M. Nolan, Executive Director

Phone: 314.652.0200

Website: www.accessacademy.org



3545 Lindell Blvd.
St. Louis MO 63103

Four ACCESS Academies Serve 214 Middle School Students

St. Cecilia Academy ①

906 Eichelberger, 63111

Holy Trinity Academy ②

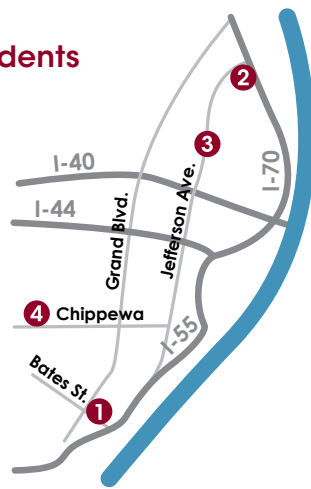
1435 Mallinckrodt St., 63107

Central Catholic Academy ③

1106 N. Jefferson Ave., 63106

The Academy at King of Glory Lutheran School ④

4293 Chippewa, 63116



ACCESS Academy Upcoming Events

Central Catholic Annual Race for Education, April 4

Contact Rochelle Hall at 314.436.0437 for more information.

Central Catholic Family Bowling Night, April 11

For more information, call Rochelle Hall at 314.436.0437.

St. Cecilia Enrichment Celebration Days, April 28-29, 1:45-2:45 p.m.

All are invited to this event featuring drama, music, circus and dance performances.

Central Catholic Ribbon Day, May 5

Call Rochelle Hall at 314.436.0437 for more information.

Holy Trinity Violin Recital/Ballroom Dancing Demonstration, May 14, 7 p.m.

Maria Center, School Sisters of Notre Dame Motherhouse at 320 East Ripa Ave.

For more information, contact Kim Lenz at 314.241.9165.

Central Catholic Honor Student Banquet, May 17

For more information, contact Rochelle Hall at 314.436.0437.

160th Anniversary Celebration of Holy Trinity Parish, May 18, 9:30 a.m.

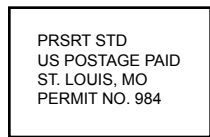
Mass will commence at 9:30 a.m., followed by a block party. Contact Kim Lenz at 314.241.9165 for more information.

St. Cecilia Parish Dinner Auction, June 21, 6:30 p.m., Bishop DuBourg High School

Cost is \$35 per person. Contact Heather Sieve for more information at 314.353.2455.

Central Catholic Second Annual Golf Outing, September 8, Glen Echo Golf Club

Call Rochelle Hall at 314.436.0437 for more information.



Graduate Acceptance Rates Rise 11%

93% of Graduating ACCESS 8th Graders Accepted to College Prep High Schools

Eighth graders attending St. Louis' ACCESS Academies have set a high school acceptance record. Fifty-seven of the 61 eighth graders graduating from Central Catholic Academy, Holy Trinity Academy, Academy at King of Glory Lutheran School and St. Cecilia Academy were accepted to attend college preparatory high schools in fall 2008.

"We are pleased to see our ACCESS student acceptances into the college prep high schools rise 11 percent from last year," said Carolyn Dubuque, director of

mission effectiveness for ACCESS. "While we delight in our students' advancement to high school, it is especially gratifying to see

so many individuals ready to take on the even greater challenge offered by private and college preparatory institutions."

ACCESS Academies Students Graduating May 2008

Cardinal Ritter College Prep High School	12	Incarinate Word Academy	2
Bishop DuBourg High School	9	Soldan International Studies High School	2
St. Elizabeth Academy High School	8	Lutheran High School North	1
Lutheran High School South	7	Nerinx Hall High School	1
Christian Brothers College High School	3	St. John Vianney High School	1
DeSmet Jesuit High School	3	St. Louis University High School	1
Notre Dame High School	3	St. Mary's High School	1
Clyde C. Miller Career Academy	2	Trinity Catholic High School	1

Investment Advisor Puts Stock in ACCESS Academies Education

"I instantly knew I wanted to help ACCESS Academies achieve their goals," said Mark Harrington, vice president-investments at A.G. Edwards/Wachovia in Clayton, Mo. "After touring an ACCESS school, I knew I could make a difference in the lives of St. Louis children."

Two months later, Harrington initiated quarterly donations, joined the ACCESS Academies board and began chairing its development committee. The development team works to attract nearly \$2 million each year from donors to help St. Louis faith-based schools provide enhanced educational opportunities to students at an affordable cost. Harrington is one of a group of donors that have pledged to give ACCESS a minimum of \$125,000 throughout the next five years.

"The results yielded by the Nativity-Miguel model of education are amazing," said Harrington. "You can tell it works just by looking at the faces of the students. And the high school placement rates reinforce

the proof of effectiveness."

All ACCESS affiliated schools have an embedded NativityMiguel program. As of February 2008, 57 of the 61 eighth graders graduating from an ACCESS Academies school had been accepted into a college preparatory high school.

"I love being part of something so powerful."

Mark Harrington

"We are seeing great results from the students and are always looking for ways to make this opportunity affordable to more," said Terry Mehan, director of development of ACCESS Academies. "About 67 percent of our students qualify for free or reduced cost lunches, which makes financial support imperative if our students are going to receive a quality education. We are grateful for Mark's generosity with his donations and

outstanding leadership."

Previously, Harrington contributed time and money to the Waterford Early Reading Program (WERP), to supply public schools with reading readiness programs.

"Education transforms lives," said Harrington. "I am part of a program that can change the self-esteem of children and increase their chances of happiness and success in life. I love being part of something so powerful."

Harrington lives in the Central West End with his wife, Jane. He enjoys biking and reading in his free time.

To visit a local academy, contact Terry Mehan at 314.652.0200 or mehant@accessacademies.org.



Mark Harrington

St. Cecilia Teacher "Literally" Makes a Difference

"When seventh graders think reading is 'cool,' the teachers must be doing something right," admits Mindy Poon, middle school language arts teacher at St. Cecilia Academy.

Poon spends each day at St. Cecilia with one fundamental focus – literacy. In addition to seeing that students meet their reading goals based on individual skill level, Poon also weaves reading into every aspect of student life. She has helped create a school culture enthusiastically infused with reading.

"Mindy has worked relentlessly to improve the reading of the students. Her total dedication has spelled success in so many ways, and the reading level and attitude of the St. Cecilia students reflect that," noted Terry Mehan, development director of ACCESS Academies.



Seventh graders at St. Cecilia Academy read and discuss *A Wrinkle in Time* during literature circle.

dents also select from more than 2,000 books at their respective reading levels to use as outside readers. At least 35 minutes of classroom time daily is devoted to reading. Teachers regularly read aloud to their classes.

"We ingrain the importance of reading in our students' minds and, thanks to our accelerated reading program and intensive language arts curriculum, the students understand what we expect of them. They have responded remarkably well to reading challenges and work hard to achieve goals," said Poon. "Student response to the program has actually reached a level we never anticipated. Students dub reading the popular thing to do."

Poon joined St. Cecilia in 2004 and was previously a teacher at St. Anthony of Padua parish school in South St. Louis. She earned her bachelor's degree in psychology from Oberlin College in Oberlin, Ohio. While pursuing her master's degree in

school counseling at Gannon University in Erie, Pa., Poon fell in love with teaching and soon after earned her teaching certificate.

St. Cecilia, located at 906 Eichelberger just south of downtown St. Louis, began operating as a NativityMiguel embedded academy in fall 2004. It was the first embedded NativityMiguel model school in the country. Currently, 43 middle school students are part of an academically challenging and highly structured learning environment that encourages the social, moral and emotional development of each student. Many St. Cecilia students learn English as a second language.

"There are times when I am brought to tears with joy. I think, 'Gosh, they're never going to get it.' Then they do," Poon enthused. "I've never experienced anything like it. It's just incredible to see our students progress and know that by year-end, our eighth graders will be ready to excel in high school."

"We now are able to buy the literature books to which our students connect."

Mindy Poon

A 10-year teaching veteran, Poon attributes the reading success of St. Cecilia students to a handful of elements, but largely credits the books the students are reading.

"Funding is a huge part of our accelerated reading program's success," Poon said. "Thanks to generous donors, we now are able to buy the literature books to which our students connect."

Reading selections for Poon's students this year include *Tuck Everlasting* by Natalie Babbitt and *The Diary of Anne Frank*. Stu-

A Personal Invitation

Scholarship and Graduate Support Opportunities

Every student attending an ACCESS Academies school relies on scholarship and graduate support funding. Participating in an **ACCESS Academy Scholarship & Graduate Support Funding Program** is a direct and tangible way to make a lasting difference in the life of a child. Please consider sponsoring a child through an endowed, multi-year, annual or partial scholarship.

ACCESS Academy Scholarship & Graduate Support Funding Program	
Partial Scholarship	Support can be given at several levels to support Graduate Support Services: \$5,000 ; Technology: \$2,500 ; Language Arts Materials: \$1,000 ; Math & Science: \$500 ; Student Performance Tracking: \$250 ; or After-School Enrichment: \$100 .
Summer Program Scholarship	\$2,000 funds a summer program scholarship to an ACCESS Academies student.
Semester Scholarship	\$4,000 gives a one-semester scholarship to an ACCESS Academies student.
Annual Scholarship	\$8,000 gives a one-year scholarship to an ACCESS Academies student.
Multi-Year Scholarship	\$24,000 provides a three-year scholarship to an ACCESS Academies student.
Endowed Scholarship	A \$160,000 endowed scholarship generates earnings of \$8,000 per year in perpetuity, funding one ACCESS Academy student every year into the future. \$50,000 generates \$2,500 annually into perpetuity, to fund a tuition grant to help pay college prep high school tuition for one ACCESS Academy alum each year into the future.
ACT Prep Course Scholarship	\$30,000 funds 120 ACCESS-sponsored juniors to attend an ACT Prep course to enhance college acceptance and scholarship success.

ACADEMY FOCUS: Holy Trinity Academy

Holy Trinity Academy in North St. Louis paints the perfect picture of how an ACCESS Academies school brings tremendous educational opportunities to students, especially to those facing the challenges of daily life in neighborhoods suffering from years of economic deterioration.

Founded as Most Holy Trinity in 1848, and located two blocks southeast of Hyde Park, the school educates children from surrounding North St. Louis neighborhoods. It focuses on providing a solid, Catholic educational foundation that engages students as active, self-directed learners. Students learn the importance of making respectful and responsible decisions that make reaching educational milestones possible.

These milestones, such as attaining a high school diploma and pursuing higher levels of education, will eventually affect both the economic success and stability of the student as an adult and the community at large. Without ACCESS Academies' support, it would be difficult to maintain such an exceptional education program at Holy Trinity, a school designated as "severe need" by the U.S. Department of Agriculture for free breakfast and lunch programs.

Funding from ACCESS Academies provides tuition assistance for 27 students to the NativityMiguel model program in grades five through eight at Holy Trinity, with such meaningful programs as:

- **Peacemaker Program.** Each child learns tools to embrace respectful and responsible decision-making on a daily basis.
- **Education through Music and the Arts.** Artisans and academic teachers integrate music and the arts throughout academic curriculum to foster creativity and self-discipline.
- **Extended Day Program.** Students in grades five through eight remain at school until 5:30 p.m. for extended-day activities based on individual student academic needs.
- **Summer Session.** Students in grades five through eight are encouraged to attend a three-to six-week summer learning program.

To further facilitate learning, Holy Trinity students are grouped into multi-age classrooms of two grade levels, allowing leadership qualities and mentoring relationships to develop among students.

"Holy Trinity is a supportive and caring environment where our children can grow both academically and emotionally," said Kim Lenz, director of development of Holy Trinity. "I love being in the school building and watching these kids – they are all wonderful!"

Beyond the classroom, ACCESS Academies continues to make stability a priority to Holy Trinity students with graduate support advisors. They maintain contact with their

students throughout high school to provide individualized tutoring, counseling, financial aid and overall encouragement.

"Our students finish our middle school program with high hopes for the future," said Carol Werner, principal of Holy Trinity. "Six of our seven graduating eighth graders will be attending private high schools in the fall, which is extraordinary."



Holy Trinity's unique music and arts program integrates musical instruction into the school day, developing the discipline and joy of playing a musical instrument.

Test Scores Climb over Three Years at St. Cecilia Academy

While parents, students, teachers and administrators agree that the NativityMiguel model of education is effective, standardized testing objectively tracks student progress.

St. Cecilia Academy, founded in 1907, became a NativityMiguel embedded school in 2004. As the first St. Louis school to affiliate with ACCESS Academies, St. Cecilia students have the longest track record of ACCESS' impact in the areas of vocabulary, word analysis, reading comprehension, listening, language, mathematics, social studies and science.

The Iowa Test of Basic Skills (ITBS) exams are given each fall. Substantial improvement has been seen among St. Cecilia students, said Carolyn Dubuque, director of mission effectiveness for ACCESS Academies.

"For this class of students, most of

whom were educated under the NativityMiguel model for three consecutive years, the test scores reveal a terrific increase. This achievement is a testament to the hard work

and devotion of the students, teachers and parents, and to the generosity of ACCESS donors and St. Cecilia for creating an environment conducive to rapid advancement."

